

AUCTION

TIMED ONLINE



Opens
September 25

CLOSES: FRIDAY, OCTOBER 2 | 11AM 2020

PREVIEW: By appointment from 10AM – 4PM on September 21-25 and September 28-29.

LOADOUT: By appointment only from 10AM – 4PM on October 5-8, unless other arrangements are made.

For preview and loadout appts. contact Rex Dummer at Steffes Group, 605.610.7989



Asst. hand tools
John Deere rechargeable & other grease guns
Barrel jacks
Bench vise
Drills
Jumper cables
Shop consumables including filters, welding rods, etc.

PARTS & FARM SUPPORT ITEMS

Front fuel tank for John Deere 5020
(8) John Deere double disc fertilizer hangers to mount 3" square tubing
(16) John Deere ProMAX 40 seed discs
John Deere soybean discs for 1770 planter
(8) John Deere seed opener discs
(10) lids for 1.6 bu. boxes
(97) John Deere seed tubes
Asst. John Deere sweeps
PTO adapters
Large amount of fittings for transfer pumps
Sieglar fuel oil furnace
Several transfer pumps, need work
(2) Tokheim gas pumps, not working
Asst. motors
Heat lamps
Load binders & chains
Chainsaws, weedeater
(80) Corrugated tin sheets
Asst. traps
Various other farm support items



4WD TRACTORS

2011 John Deere 9630, deluxe cab., buddy seat, 18 spd. powershift, 4 hyd., integrated auto steer, diff lock, radar, Xenon rear lights, (6) 450 lb. & (4) 1,500 lb. weights, Michelin 800/70R38 duals, 929 hrs., S/N1RW9630PPAP022274

1974 Case 2670, 12 spd. powershift, rear steer, 4 hyd., 3 pt., block heater, 12' manual tilt dozer blade, 23.1-30 tires, shows 26,196 hrs., missing RH door & rear window, S/N8763533

MFWD & 2WD TRACTORS & LOADER

2011 John Deere 8335R, MFWD, ILS, deluxe CommandView cab, XM satellite radio, 16 spd. powershift, ActiveCommand steering, 4 hyd., 60 gpm hyd. pump, return flow, 3 pt., quick hitch, 1000 PTO, integrated auto steer, GS3 7" color touch display, rear 3 pt. control, radar, cold weather start pkg., HID light pkg., (16) front & 450 lb. rear weights, front fenders, 380/80R38 front duals, 480/80R50 rear duals, 2,962 hrs., S/N1RW8335REBP045825

2013 John Deere 6150R, MFWD, IVT, deluxe cab, LH reverser, 3 hyd., 3 pt., quick hitch, 540/1000 PTO, integrated auto steer, GS3 7" display, rear 3 pt. control, cold weather pkg., 3-function joystick, John Deere H360 loader, 7' bucket w/manual quick tach 5-tine grapple, deluxe lighting, inside rear weights, front/rear fenders, 380/85R30 front tires, 480/80R42 rear tires, 1,134 hrs., loader S/N1P0H360XLD006168, tractor S/N1RW6150RCD008456

2005 John Deere 6403, open station ROPS, 4 cyl. diesel, 9F/3R synco, 2 hyd., 3 pt., 540/1000 PTO, diff lock, 10:00-16 front tires, 18.4-34 rear tires, hour meter not working, S/NP06403X003004

1979 John Deere 4640, quad range, 3 hyd., 3 pt., 1000 PTO, 50 Series step, front fenders, (10) front weights, 14L-16.1 front tires, 18.4R42 duals, shows 1,959 hrs., S/N4640H008040R

1972 John Deere 4320, diesel, 8 spd. synco, side console, 2 hyd., 3 pt., 540/1000 PTO, diff lock, 10:00-16SL front tires, 18.4-38 rear tires, shows 2,862 hrs., S/NT613R019118R

1969 John Deere 5020, cab, 8 spd. synco, center console, 2 hyd., 3 pt., quick hitch, 1000 PTO, diff lock, 11:00-16 front tires, 18.4-38 duals, shows 8,286 hrs., 5 hrs. on rebuilt engine, S/NT313R025799R

Allis Chalmers G, 4 cyl. gas, with 6-way 5-1/2' blade, 5:30-12 front tires, 6:2-30 rear tires
John Deere A, narrow front, open station, 6 spd., 1 hyd., 540 PTO, 5:50-15 front tires, 12.4-33 rear tires, S/N599292

GPS EQUIPMENT

John Deere 2630 display, S/NPCGU2UA206386
John Deere 2600 display, S/NTCGU26H199745
John Deere 3000 receiver, S/NPCGT3TA302373
John Deere ITC receiver, S/NPCGT01C41170
John Deere 3000 receiver, old style shroud S/NTCP3TA301906

HARVEST EQUIPMENT

2015 John Deere S660, premium cab, air seat, Contour-Master, 3 spd., variable spd. feeder house, reverser, GS3 7" touch screen display, Tri-Stream ext. wear rotor, Maurer hopper ext., coolant heater, round bar concaves, 520/85R42 front duals, 600/70R28 rear tires, 581.7 sep. hrs., 833.5 engine hrs., S/N1H0S660SCF0775547

2015 John Deere 608C Stalkmaster chopping corn head, knife rolls, RowSense, ear savers, stubble lights, single pt. hookup, S/N1H00608CTEC766548

2008 John Deere 630F Hydraxflex flex head, 30' hyd. fore/aft, low dam, finger reel, composite fingers, stubble lights, single pt. hookup, S/NH00630F725789

John Deere 212 pickup head, 4-belt pickup, S/N317798H
2006 Wabasso header trailer, 30', 14" tires, S/N1W9PU4024WW296978

GRAIN CART & GRAVITY BOXES

Brent 1082 grain cart, 1,000 bu., hyd. fold corner auger, hyd. rotating spout, Shur-Co electric roll tarp, clean out door, cameras that plug into 2600/2630 display, big 1000 PTO, 35.5L-32 tires, S/NB33090106
Parker gravity box, 500 bu., ext. tongue, Westendorf gear, 16.5-16.1L tires

GRAIN CART & GRAVITY BOXES

Parker gravity box, 500 bu., ext. tongue, running gear, 16.5-16.1L tires on 8-bolt rims
Parker gravity box, 400 bu., dual compartment, ext. tongue, 10:00-20 tires on 8-bolt rims

PLANTERS

2006 John Deere 1770NT planter, 16x30", 2 pt., Pro-Shaft drive, MaxEmerge XP row units, 3 bu. boxes, Precision seed meters, HD spring down pressure, 1" rubber closing wheels, half-width disconnect, single disc fertilizer openers, ground drive pump 600 gal. poly tank, 350 monitor, hyd. markers, S/NA01770Y715153
John Deere 1250 planter, 6x30", S/N019619B
John Deere 490 check wire planter, 4 row

DRILLS

John Deere 455 drill, 25', 7-1/2" spacing, single box, double disc openers, 1" rubber closing wheels, outside heavy duty scrapers, half-width disconnect, 7.50-15 double rib tires, S/NN00455H001757
Minneapolis Moline drill, 11', 6" spacing, double disc openers

TILLAGE EQUIPMENT

2014 John Deere 2623 disc, 49'3", 9" spacing, hyd. leveling, single pt. depth, 26"x25" blades, 20" finish blade, walking tandems, Summers 3-bar harrow, S/N1N02623XCE0755658
John Deere 22B single shank ripper, 3 pt., mole ball, S/N1P0022BXCA003516
John Deere semi-mount plow, 7x20", coulters, buster bar, missing hyd. lift cyl.
Plow, 5x18", 2 pt., coulters
John Deere rolling packer, 16', hitch leveling, rear scrapers, 11L-16 tires

ROW CROP EQUIPMENT

John Deere 85 row crop cultivator, 8x36", 3 pt., hyd. fold, gauge wheels, S/N000298
John Deere 400 rotary hoe, 28', 3 pt., end transport, S/N045463N

SEMI TRACTOR & BOX TRUCKS

1993 IHC 4400 tandem axle, day cab, L10 Cummins, 330 hp., 10 spd., engine brake, air susp., air slide 5th, cruise, dual 105 gal. fuel tanks, 12,000 lb. front, 40,000 lb. rear, 207" WB, 295/75R22.5 tires on aluminum rims, 762,700 miles, New clutch
2002 IHC 9400 tandem axle twin screw, DT466E, automatic, 20"x96"x60" sides steel box, Scott twin ram hoist, combo gate, Sioux City roll tarp, air susp., 295/75R22.5 tires on steel rims, 149,102 miles
1982 IHC S1900 tandem axle twin screw, DT466, 5&2 spd., Obeco 22"x94"x60" sides box, twin ram hoist, spring susp., 10:00-20 tires on steel rims, 101,486 miles

HOPPER BOTTOM & OTHER TRAILERS

1998 Timpte tandem axle hopper bottom, 42"x96"x66", non-ag hoppers, Neway air ride susp., Shur-Co 4500 Series HD tarp, ProTrap Smart2 hopper openers w/remote, Haldex Scale-O-Matic, 285/75R24.5 tires on steel rims
2006 TrailMaster tandem axle goseneck trailer, 25'x8', 5' beavertail w/ramps, spring susp., 16" tires
Boulton tandem axle goseneck livestock trailer, 24', spring susp., 9.50-16.5 tires, No Title, non-roadable
Carry-On utility trailer, 5'x8', rear folding ramp, 4.80x12 tires, Bill of Sale only

SPRAYERS

1999 John Deere 4700 self-propelled sprayer, 90' boom, 750 gal. SS tank, 20" spacing, triple nozzle bodies, 5-section boom control, fence row nozzles, GS1 brown box display, 120 gal. rinse tank, 35 gal. foam marker tank, radar, field lights, underframe shields, hyd. axle adj., fenders, 385/85R34 tires, 2,165 hrs., S/NN04700X004605
BestWay pull-type sprayer, 60' hyd. boom, 700 gal. poly tank, 20" spacing, single nozzle bodies, 3-section control, hyd. pump, foam markers, adj. axles, walking tandems, 12.5L-15 tires

NH3 EQUIPMENT

Case-IH DMI 5300 Nutri-Placr NH3 applicator, 21 shank, 30" spacing, John Blue fittings, 24" coulters, rear hitch, S/NJFH0036801
NH3 applicator, 11 shank, manifold, 9.5L-15 tires on 6-bolt rims, needs new points & shanks
1,000 gal. NH3 tank

HAY & FORAGE EQUIPMENT

John Deere 894A left hand side delivery rake, ground drive, 7.50-15 tires, S/N45354
Kuhn GMD700 disc mower, 9', 3 pt., 540 PTO, welded frame, S/N961575
New Holland 275 square baler, twine, 540 PTO, S/N4408
Hesston 30A Stakhand stacker, 540 PTO, 16.5L-16.1 tires
Bale spear, 60", 2-prong, 3 pt.
Silage wagon on Roorda running gear
John Deere 237 cornpicker, 2 row, S/N009613N
Clipper 2B fanning mill

LIVESTOCK EQUIPMENT

(25) concrete feneline feed bunks, 10' Cattle working chute
(2) Wood feed bunks, 2x12 construction, 3'x14'x30"
(18) concrete feed bunks, 5'x10'x12", in the lot
Large asst. gates, various sizes

SEED TENDER & GRAIN HANDLING EQUIPMENT

Friesen 220 seed tender, (2) compartments, 6" manual spout, Honda GX160 motor w/electric start, 5.5 hp., on tandem axle ball hitch trailer, S/N31944
REM VRX grain vac, 7' pipe, (1) rubber, (2) steel, & (2) solid tubes, cleanup pkg., 1000 PTO, 149 hrs., S/NVRX40783
Rolling Flow rotary grain screener, 22"x60", 1 hp. electric motor
Westfield MK110-77 auger, 77"x10", electric drive, power swing hopper, hyd. lift, 540 PTO, S/N155810
Sudenga auger, 70"x12", swing hopper w/lift, 540 PTO, S/N46-233
Dempster jump auger, 7", Baldor 5 hp. electric motor
Pencil auger, 10'x4", electric mount, no motor
Caldwell bin fans
Master Mfg 25 gal. sprayer
Bomgaars ATV sprayer, 25 gal. w/boom & hand wand
Sprayer, 25 gal., not working

OTHER EQUIPMENT

Blade, 9', manual angle adj., 3 pt.
John Deere #5 rear-mount mower, 7' bar, hyd. raise, 540 PTO
Frontier pallet forks, 48", to fit H360 loader, S/N1XFAP126VD0005788
Asst. running gears including John Deere
John Deere AMT600 Gator, 5-wheel, dump box, not running
John Deere 208 transfer pump, 2" white hoses

TANKS

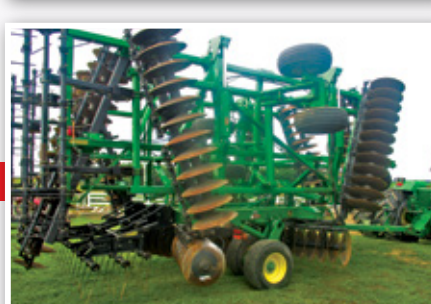
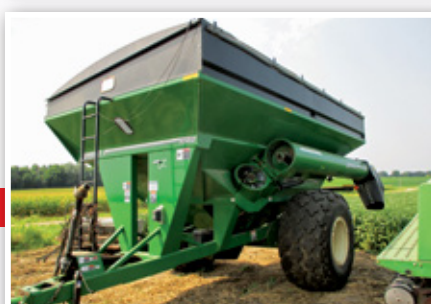
Poly tanks: 1,600 gal.; (2) 1,550 gal.; (2) 1,250 gal.; 1,100 gal.; 450 gal.
(2) **Snyder 170 gal. poly tanks**
1,000 gal. fuel tank, Fill-Rite 20 gpm pump, Fill-Rite 900 meter, 50' of 1" hose
500 gal. fuel tank, no pump
300 gal. fuel tank w/pump
1990 American Welding 1,000 gal. propane tank
1978 Trinity Industries 500 gal. propane tank
1988 Trinity Industries 250 gal. propane tank

SHOP EQUIPMENT

John Deere PR-3000GS pressure washer, Subaru 7 hp. motor, 3000 PSI, 2.4 gpm
Shop press, 2 ton jack
Tractor splitting stands
Packard Precision HD band saw, 3/4 hp.



FREDERICK L. ELBERT ESTATE
Dolores Elbert, PR
Dennis Shelton, 605.471.9706
or contact Rex Dummer at Steffes Group, 605.610.7989



SteffesGroup.com

Steffes Group, Inc., 1688 Hwy 9, Larchwood, IA 51241 | 712.477.2144



TERMS: All items sold as is where is. Payment of cash or check must be made sale day before removal of items. Statements made auction day take precedence over all advertising. \$35 documentation fee applies to all titled vehicles. Titles will be mailed. Canadian buyers need a bank letter of credit to facilitate border transfer. Scott Steffes MN14-51, Brad Ostad MN14-70, Max Steffes MN14-031, Justin Ruth MN14-041

